

Parking Garage System



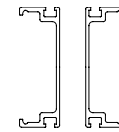
The Aluma Frame Parking Garage System converts the Aluma Frame<sup>®</sup> into a ledger bearing frame. With this configuration, both beam and slabs can be supported from a single table reducing the amount of equipment and labour required.



**1. Garage Beam System Caster & Screw Adaptor**  
Supports screwjacks and casters for parking garage beam system.



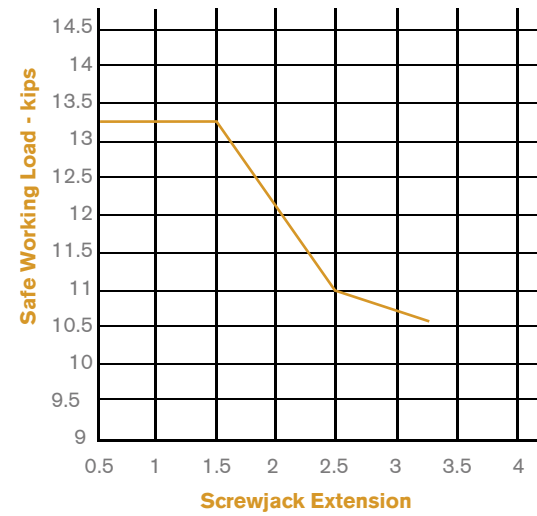
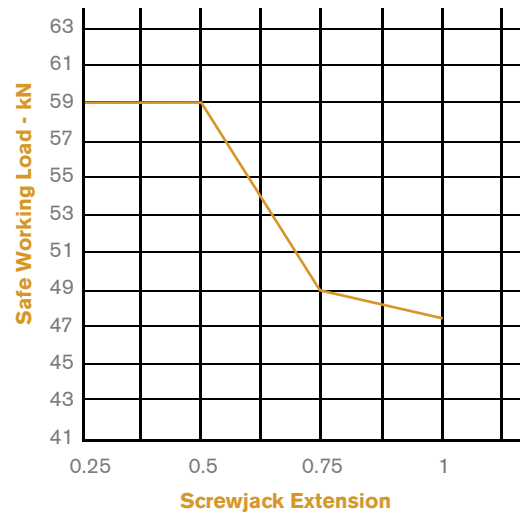
**2. Garage Beam System Beamside Assembly**  
Provides side support for concrete beams. Has min. extension of 2'-7" to a max. of 3'-4". Height is adjustable at increments of 3".



**3. 55k Strongback**  
Strongbacks are used to support joists.

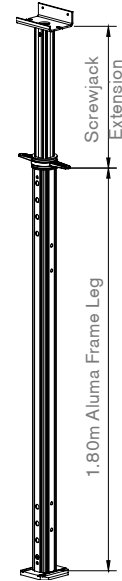
Aluma Frame Leg Post Shore Capacity

\* Note: Equipment shown is for demonstration purposes only



A single Leg with base plate, an 1.0m Screwjack & a J-Head turns the Aluma Frame Leg into a light & efficient post shore that is twice as strong as standard steel post shores.

Note:  
1. Load capacity based on a 3:1 factor of safety as required in Canada & USA  
2. Capacity for reference only and should not be used for design purposes.



CANADA			USA			INTERNATIONAL		
<b>Calgary, AB</b> T 403.212.4832	<b>Saint John, NB</b> T 506.633.9820	<b>Toronto, ON</b> T 905.669.5282	<b>Atlanta, GA</b> T 404.699.0979	<b>Las Vegas, NV</b> T 702.866.6513	<b>Tampa, FL</b> T 813.626.1133	<b>International</b> T 905.699.5282	<b>Latvia/Baltics</b> T +371.29.430.518	<b>United Kingdom</b> T +44.1702.232.464
<b>Edmonton, AB</b> T 780.440.1692	<b>Dartmouth, NS</b> T 902.468.9533	<b>Vancouver, BC</b> T 604.940.3000	<b>Baltimore, MD</b> T 301.937.5090	<b>Phoenix, AZ</b> T 602.212.0350		<b>Indonesia</b> T +62.21.526.2405	<b>Mexico/S.America</b> T +52.55.9000.3749	
<b>Montreal, QC</b> T 514.383.1985	<b>Saskatoon, SK</b> T 306.931.7888	<b>Victoria, BC</b> T 250.652.9409	<b>Chicago, IL</b> T 847.875.4526	<b>San Jose, CA</b> T 408.238.6969		<b>Israel</b> T +972.6.6769963	<b>Middle East</b> T +971.4.341.3717	
<b>Ottawa, ON</b> T 613.745.7081	<b>St. John's, NL</b> T 709.753.3325	<b>Winnipeg, MB</b> T 204.633.7072	<b>Dickinson, TX</b> T 832.226.5100	<b>Seattle, WA</b> T 425.251.0270		<b>Japan</b> T +81.090.5797.0643	<b>South East Asia</b> T +65.6268.0375	

Aluma Frame  
Aluma Frame Product Sheet

# Aluma Frame<sup>®</sup> System

Introduction

Increased Productivity

The 6 ft. (1.83 m) wide frame promotes an open layout, providing easier movement for workers and larger shoring coverage per leg, compared to traditional frames. Aluma Frame's<sup>®</sup> wider design results in 50% less components to handle over a given shoring area.

Easy To Carry

The Aluma Frame System is easy to carry because each Aluma Frame<sup>®</sup> is constructed of lightweight aluminum and weighs only 42 lbs. (19kg). One man can carry a frame with base plates, screw jacks and the J-head attached; there is no need to dismantle components.

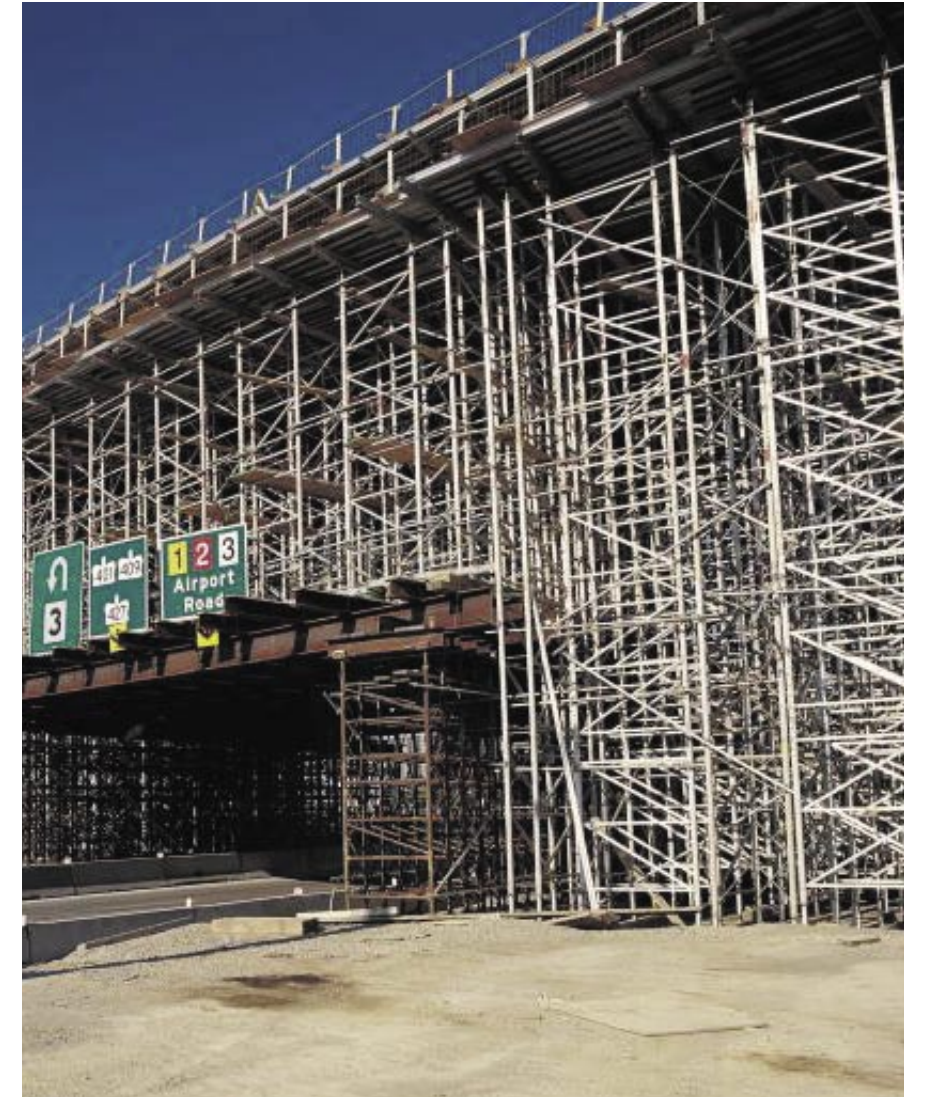
Versatility

In elevated shoring applications, the Aluma Frame<sup>®</sup> can be erected without a crane, saving staging time, equipment and erection labor.

The combination of multiple frame heights, screw jacks and extension staffs make reaching any height easy and economical. The Aluma Frame<sup>®</sup> is also used to create small flying tables in circumstances where larger Truss systems are not required.

Intelligent Design

The Aluma Frame<sup>®</sup> is the only mechanically connected setup shoring frame on the market today. Fast, safe and inexpensive repairs can be made on site using a wrench. The original capacity of the frame is not affected by these repairs unlike competing systems that require welding.



Safe

- Engineered by an experienced, safety-award-winning team.
- Manufactured under a tight quality control program.
- The Aluma Frame<sup>®</sup> System conforms to all forming regulations, including CSA, CAL-OSHA and ANSI.

Smart

- Frame legs can be unbolted and used as post shores.
- Compatible with full range of Aluma Beams<sup>®</sup> and Stringers.
- Allows the use of screwjacks at the top and bottom of the table forms.

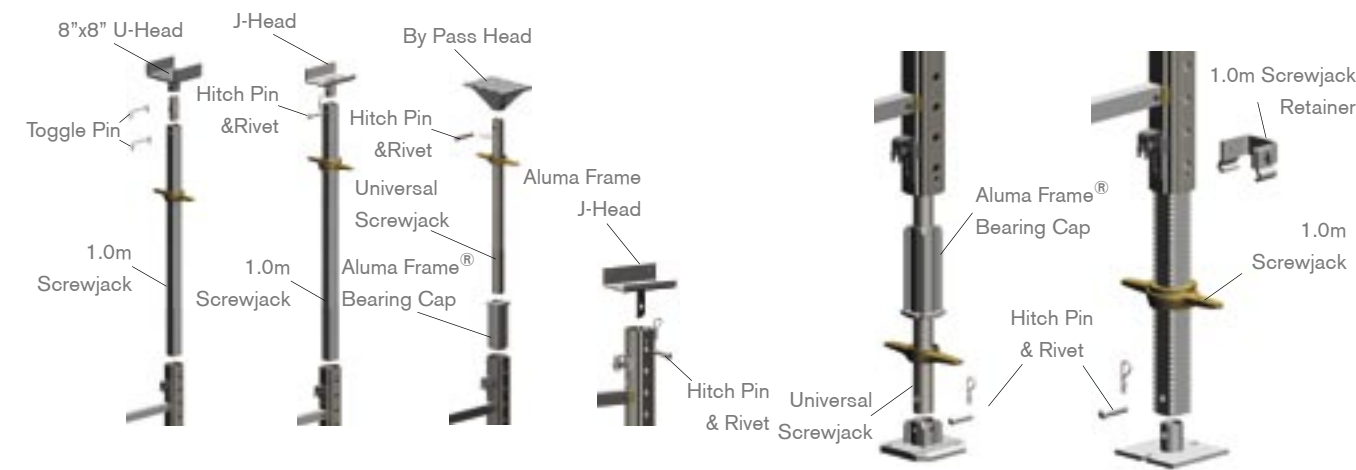
Efficient

- More than 50% stronger than a 20 kip (10 kip/leg) steel frame.
- Wider frames reduce the number of shoring frames needed.
- High strength accessories provide strength & durability when required.

Available Aluma Frame® Sizes

6' (1.83m) x 3' (0.96m)	6' (1.83m) x 5' (1.50m)	6' (1.83m) x 6' (1.80m)	6' (1.83m) x 7' (2.10m)	6' (1.83m) x 8' (2.44m)
Item #: 4767	Item #: 4841	Item #: 4766	Item #: 233	Item #: 3336
Weight: 15.0 kg (33.1 lbs)	Weight: 18.0 kg (39.6 lbs)	Weight: 20.0 kg (44.2 lbs)	Weight: 23.0 kg (50.8 lbs) (Non Standard Size)	Weight: 31.6 kg (69.8 lbs)

Possible Aluma Frame® Attachment Combination



Aluma Frame® Typical Components

Aluma Frame® Interframe Connector Item #: 231 Weight: 0.9 kg (2.0 lbs)	1.0m Screwjack Handle Item #: 7438 Weight: 2.0 kg (4.5 lbs)	Universal Screwjack Handle Item #: 515 Weight: 1.1 kg (2.4 lbs)	1.0m Screwjack Retainer Item #: 7071 Weight: 1.1 kg (2.4 lbs)	1.0m Screwjack Item #: 7437 Weight: 4.6 kg (10.2 lbs)
J - Head Item #: 239 Weight: 2.8 kg (6.3 lbs)	Bearing Cap Item #: 234 Weight: 0.9 kg (2.0 lbs)	Hitch Pin Item #: 4045 Weight: 0.01 kg (0.03 lbs)	Steel Base Plate Item #: 474 Weight: 2.7 kg (6.0 lbs)	Universal Screwjack Item #: 514 Weight: 4.4 kg (9.7 lbs)

Cost Effective, Flexible & Versatile



1. Aluma Frame®

The Aluma Frame® is a light-weight, heavy-duty shoring Frame that has an increased area coverage and higher load carrying capacity than steel frames.

Made from AL 6061-T6, the Aluma Frame® is also very durable and weather resistant. Connections are bolted for easy replacement of damaged parts, thus reducing repair costs and time.

All Frames are 6' (1.83m) wide with heights starting at 3' (0.96m) all the way up to 8' (2.48m).



\* Note: Equipment shown is for demonstration purposes only



2. Screwjack Retainer

The screwjack retainer fastens the 1.0m Screwjacks in place during table flying or when the frame table is being moved by the transport dolly, thus eliminating disassembly time.



3. Top Attachments

The Aluma Frame® is compatible with a variety of Aluma attachments, such as the U-Head, J-Head, & By-Pass Head.



4. Bottom Attachments

The Aluma Frame® is compatible with a variety of Aluma attachments, such as the Aluminum Base plate, Screwjack Base Plate & Steel Base Plate.